

Showcase Linear 1000

GlobalLED

A Display Case Lighting System

Applications:

- Product Presentation Cases
- Point of Sale Display Counters
- Cold Product Display Cases
- Jewelry Cases for Accent Lighting
- Candy, Perfume, Watches, Cutlery, etc.
- Back Lighting (translucent mode)
- Cove Lighting (projection mode)

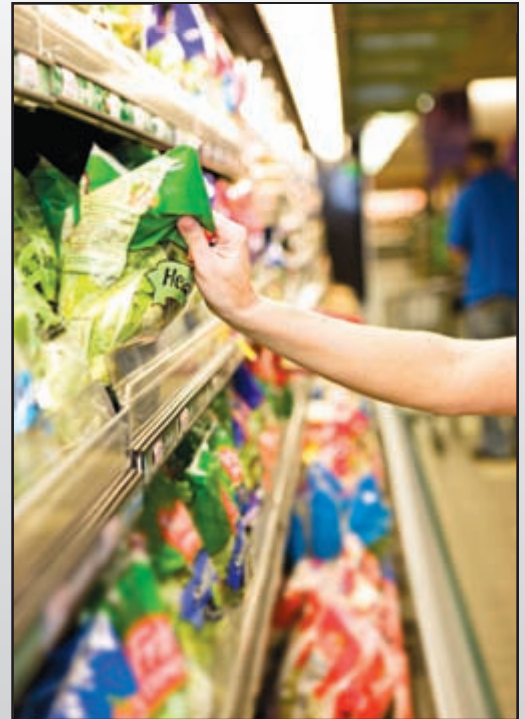
Features:

- Long life
70% output at 50,000 hours
- LEDs protected with acrylic lens
- IP66 rated power supply
Outdoor
Wet
- Dimmable model available
- Unique color mixing to accent and highlight

Benefits:

- No heat in LED light
Can't cook product
- No UV or IR emitted
No damaging light
- No Gas, No Glass, No Mercury
A naturally "GREEN" product

Showcase Linear is a versatile, efficient lighting system that provides more light for the task from the lowest possible power. Its sharp beam shaping reduces waste by placing every lumen on the target, and allows the designer to know in advance where to place the light.



GlobalLED
Solutions

2400 Cantrell Road, Suite 100
Little Rock, AR 72202
501-748-1660 office • 501-374-1399 fax
www.globaled-solutions.com

"Showcase" your product in the best "light" possible

Showcase Linear 1000

Technical Specifications

Specifications:

- Operating Voltage
 - 100-277VAC 47-63 Hz.
- Power Factor
 - > 0.90 THD < 20%
- Operating Temperatures
 - -30° C to 50° C
- Power
 - 20 watts in 4 ft., 3 – LEDs per foot
- Maximum Temperature Rise
 - 15° C
- Lumens
 - 1200 (4 ft. 12 – LED unit)
- Illuminance
 - 150 foot candles at 2 ft.
- Color Temperature
 - 3700K – 4100K (neutral white)
 - Available 2700K – 8000K (amber, blue, and mixed)
- CRI
 - >80 with neutral white
- Output Beam
 - Width 60°, End Peaks 45°

Option Multipliers

- For Watts, Lumens
(From 4 ft., 3 – LEDs per foot)
 - 4 foot 2 LEDs/ft. multiply above by 0.67
 - 2 foot unit: multiply 4' specs by 0.5
 - 3 foot unit: multiply 4' specs by 0.75

Installation

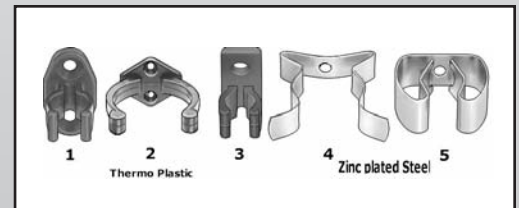
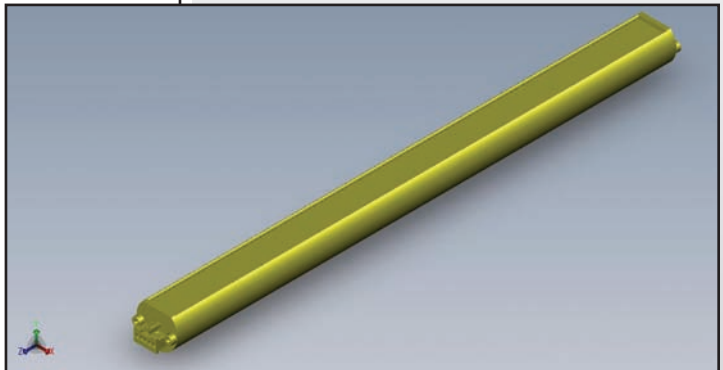
- Mounting requires a rod holder at each end, allowing easy angle adjustment.
- Electrical
 - 18" leads to driver. Driver needs 2-lines and ground.

Showcase Linear mixes its light at the target

- When lighting a diffuse surface, a uniform light is created for back lighting or cove lighting
- Direct lighting specularly reflective targets can create a glistening effect
- Different color LEDs may be combined to accent specular target colors and enhance product appearance.
 - The designer is cautioned to this effect when backlighting

Options

- Available in 2', 3', 4' and custom lengths
- Custom emission colors for accent lighting



GlobalLED
Solutions

2400 Cantrell Road, Suite 100
Little Rock, AR 72202
501-748-1660 office • 501-374-1399 fax
www.globaled-solutions.com